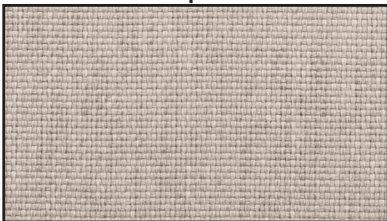




ZENHIT LOUNGE STANDARD FABRICS

ALL OTHER FABRICS & COLOURS AVAILABLE ON REQUEST PP. 408-413

NATURAL GREY DOT
REF: NGD - CAT. B



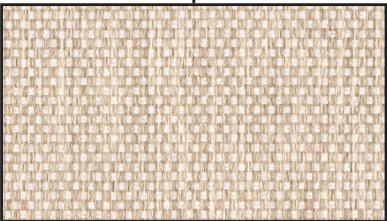
NATURAL SILVER DOT
REF: NSD - CAT. B



NATURAL LINEN DOT
REF: NLD - CAT. B

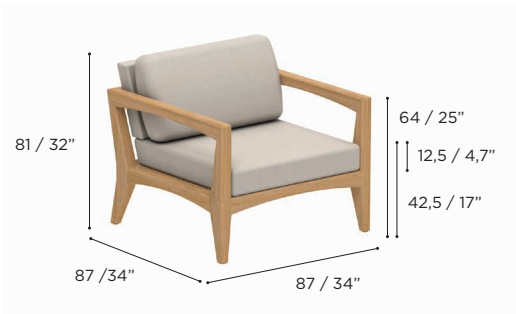


NATURAL WHITE DOT
REF: NWD - CAT. B



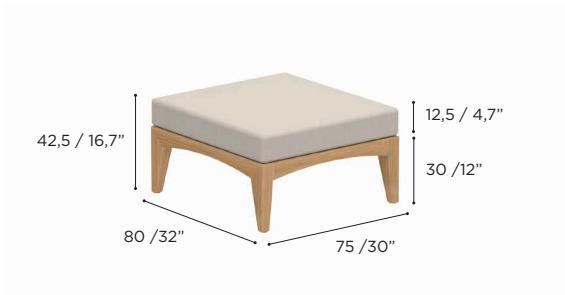
ZENHIT LOUNGE SPECIFICATIONS

ONE SEATER	
REF:	ZNTL 100...
WEIGHT:	22,9 kg / 50,5 Lbs



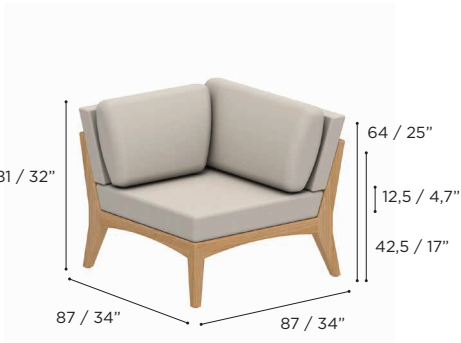
	TEAK
	W
	ZNTL 100
	•
	CUSHIONS
	PIL ZNTL 100... (3pcs)
STAND.	•
CAT. A	•
CAT. B	•
CAT. C	•

FOOTREST / SIDE TABLE	
REF:	ZNTL 75T...
WEIGHT:	15,1 kg / 33,3 Lbs



	TEAK
	W
	ZNTL 75T
	•
	CUSHIONS
	PIL ZNTL 75T... (1pc)
STAND.	•
CAT. A	•
CAT. B	•
CAT. C	•

LOUNGE CORNER	
REF:	ZNTL 80C...
WEIGHT:	20,3 kg / 44,8 Lbs



	TEAK
	W
	ZNTL 80C
	•
	CUSHIONS
	PIL ZNTL 80C... (5pcs)
STAND.	•
CAT. A	•
CAT. B	•
CAT. C	•

LOUNGE TABLE	
REF:	ZNTL 150T...
WEIGHT:	24,3 kg / 53,6 Lbs



	TEAK
	W
	ZNTL 150T
	•

ZENHIT LOUNGE SPECIFICATIONS

TWO SEATER	
REF:	ZNTL 160Z...
WEIGHT:	27,5 kg / 60,6 Lbs



TWO SEATER RIGHT	
REF:	ZNTL 160R...
WEIGHT:	31 kg / 67 Lbs



TWO SEATER LEFT	
REF:	ZNTL 160L...
WEIGHT:	31 kg / 67 Lbs



TWO SEATER	
REF:	ZNTL 160...
WEIGHT:	35 kg / 76,3 Lbs



STANDARD / ON REQUEST

	TEAK
	W
	ZNTL 160Z
	CUSHIONS
	PIL ZNTL 160... (5pcs)
STAND.	•
CAT. A	•
CAT. B	•
CAT. C	•
	2x PIL ZNTL 100... (6pcs)
STAND.	•
CAT. A	•
CAT. B	•
CAT. C	•

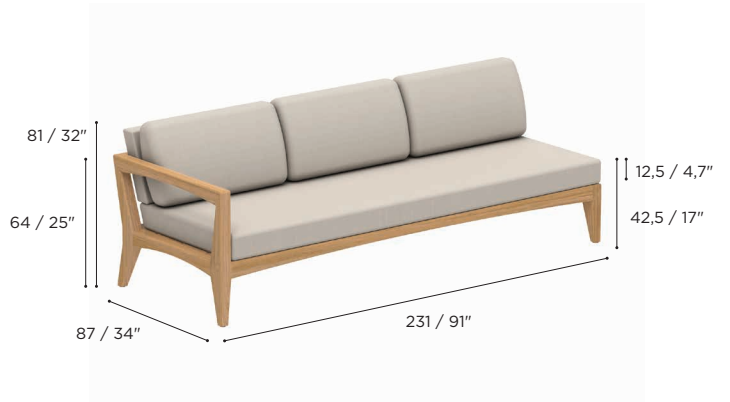
	TEAK
	W
	ZNTL 160R
	CUSHIONS
	PIL ZNTL 160... (5pcs)
STAND.	•
CAT. A	•
CAT. B	•
CAT. C	•
	2x PIL ZNTL 100... (6pcs)
STAND.	•
CAT. A	•
CAT. B	•
CAT. C	•

	TEAK
	W
	ZNTL 160L
	CUSHIONS
	PIL ZNTL 160... (5pcs)
STAND.	•
CAT. A	•
CAT. B	•
CAT. C	•
	2x PIL ZNTL 100... (6pcs)
STAND.	•
CAT. A	•
CAT. B	•
CAT. C	•

	TEAK
	W
	ZNTL 160
	CUSHIONS
	PIL ZNTL 160... (5pcs)
STAND.	•
CAT. A	•
CAT. B	•
CAT. C	•
	2x PIL ZNTL 100... (6pcs)
STAND.	•
CAT. A	•
CAT. B	•
CAT. C	•

ZENHIT LOUNGE SPECIFICATIONS

THREE SEATER RIGHT	
REF:	ZNTL 240R...
WEIGHT:	50 kg / 108,5 Lbs



	TEAK
	W
	ZNTL 240R
	•
	CUSHIONS
	PIL ZNTL 240... (7pcs)
STAND.	•
CAT. A	•
CAT. B	•
CAT. C	•
	3x PIL ZNTL 100... (9pcs)
STAND.	•
CAT. A	•
CAT. B	•
CAT. C	•

THREE SEATER LEFT	
REF:	ZNTL 240L...
WEIGHT:	50 kg / 108,5 Lbs



	TEAK
	W
	ZNTL 240L
	•
	CUSHIONS
	PIL ZNTL 240... (7pcs)
STAND.	•
CAT. A	•
CAT. B	•
CAT. C	•
	3x PIL ZNTL 100... (9pcs)
STAND.	•
CAT. A	•
CAT. B	•
CAT. C	•

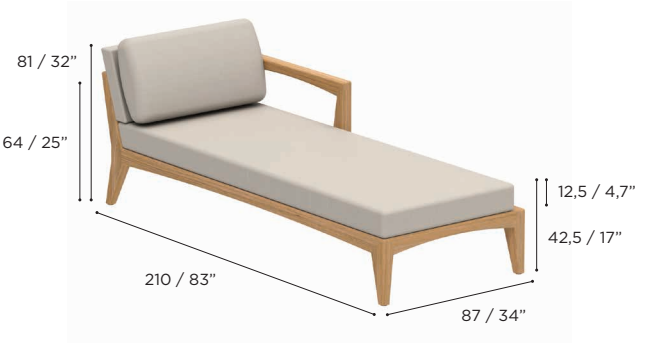
THREE SEATER	
REF:	ZNTL 240
WEIGHT:	54 kg / 111,3 Lbs



	TEAK
	W
	ZNTL 240
	•
	CUSHIONS
	PIL ZNTL 240... (7pcs)
STAND.	•
CAT. A	•
CAT. B	•
CAT. C	•
	3x PIL ZNTL 100... (9pcs)
STAND.	•
CAT. A	•
CAT. B	•
CAT. C	•

ZENHIT LOUNGE SPECIFICATIONS

DAYBED LEFT	
REF:	ZNTL DBL...
WEIGHT:	40 kg / 88,2 Lbs



DAYBED RIGHT	
REF:	ZNTL DBR...
WEIGHT:	40 kg / 88,2 Lbs



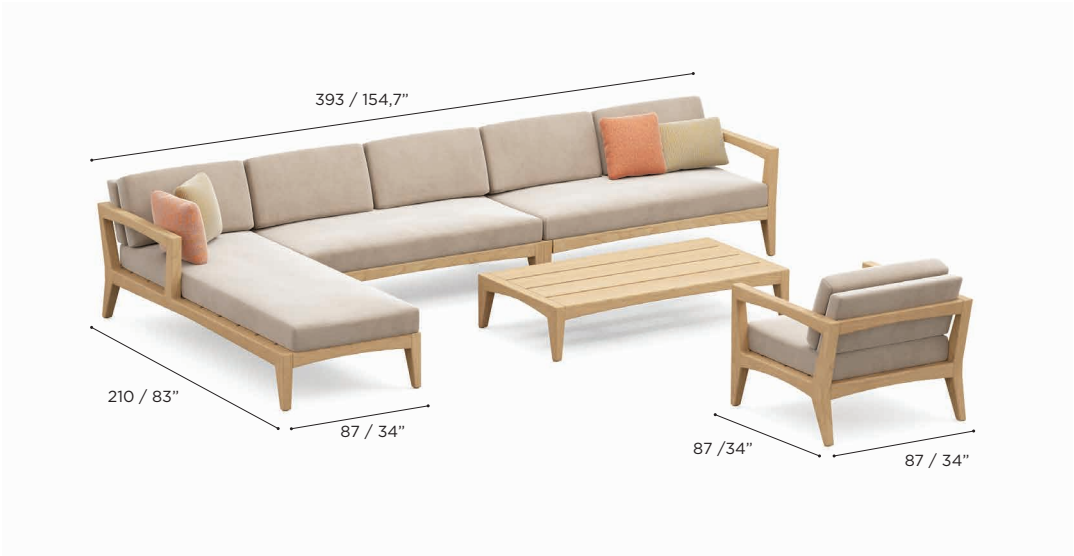
STANDARD / ON REQUEST

	TEAK
	W
	ZNTL DBL
	•
	CUSHIONS
	PIL ZNTL DB... (3pcs)
STAND.	•
CAT. A	•
CAT. B	•
CAT. C	•

	TEAK
	W
	ZNTL DBR
	•
	CUSHIONS
	PIL ZNTL DB... (3pcs)
STAND.	•
CAT. A	•
CAT. B	•
CAT. C	•

ZENHIT LOUNGE SETS

SET 01	
REF:	ZNTL SET 01
INCLUDED:	
1 x	ZNTL 160L
1 x	ZNTL 160Z
1 x	ZNTL DBR
1 x	ZNTL 150T
1 x	ZNTL 100
2 x	PIL ZNTL 160... (5pcs)
1 x	PIL ZNTL DB... (3pcs)
1 x	PIL ZNTL 100 (3pcs)
PRICE FOR STANDARD CUSHIONS	



ZNTL SET 01

SET 02	
REF:	ZNTL SET 02
INCLUDED:	
1 x	ZNTL 240
1 x	ZNTL 150T
2 x	ZNTL 100
1 x	PIL ZNTL 240... (7pcs)
2 x	PIL ZNTL 100 (3pcs)
PRICE FOR STANDARD CUSHIONS	



ZNTL SET 02

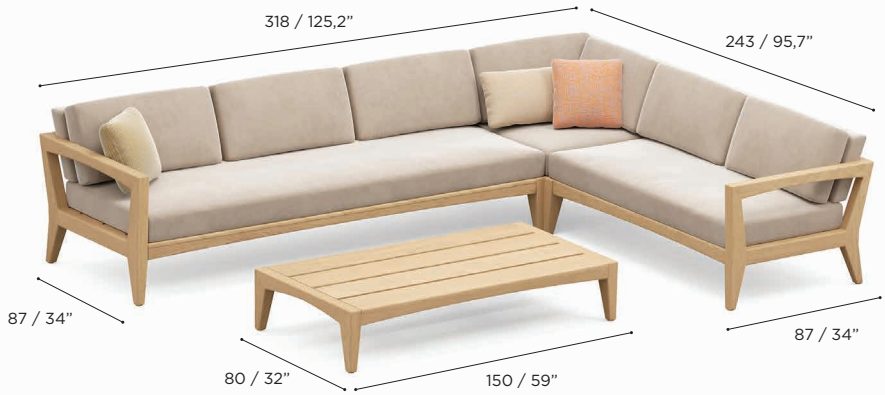
SET 03	
REF:	ZNTL SET 03
INCLUDED:	
1 x	ZNTL DBR
1 x	ZNTL DBL
2 x	PIL ZNTL DB... (3pcs)
PRICE FOR STANDARD CUSHIONS	



ZNTL SET 03

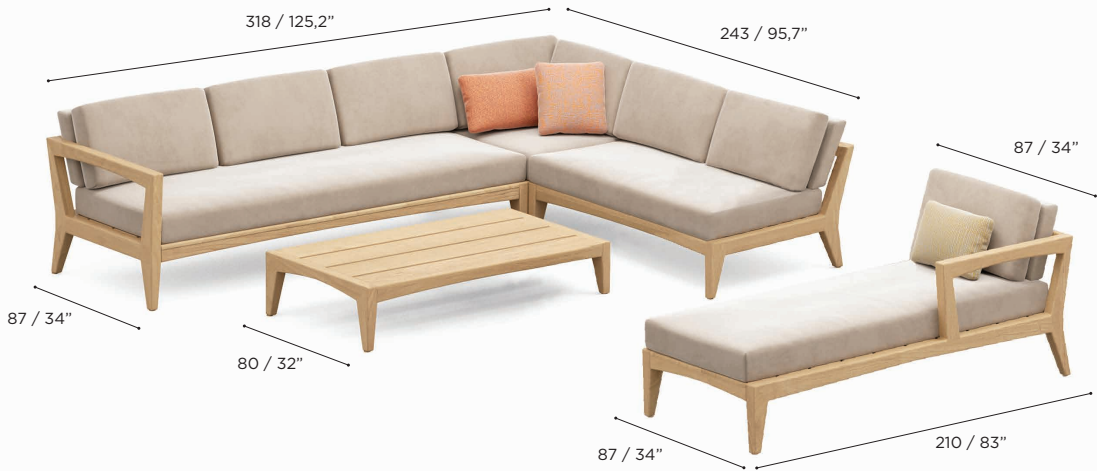
ZENHIT LOUNGE SETS

SET 04	
REF:	ZNTL SET 04
INCLUDED:	
1 x	ZNTL 150T
1 x	ZNTL 240R
1 x	ZNTL 80C
1 x	ZNTL 160L
1 x	PIL ZNTL 240... (7pcs)
1 x	PIL ZNTL 80C... (5pcs)
1 x	PIL ZNTL 160... (5pcs)
PRICE FOR STANDARD CUSHIONS	



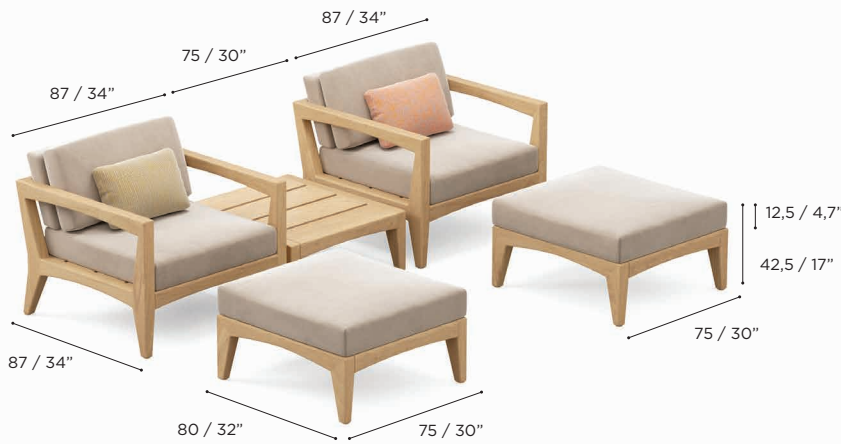
ZNTL SET 04

SET 05	
REF:	ZNTL SET 05
INCLUDED:	
1 x	ZNTL 150T
1 x	ZNTL 240R
1 x	ZNTL 80C
1 x	ZNTL 160Z
1 x	ZNTL DBL
1 x	PIL ZNTL 240... (7pcs)
1 x	PIL ZNTL 80C... (5pcs)
1 x	PIL ZNTL 160... (5pcs)
1 x	PIL ZNTL DB... (3pcs)
PRICE FOR STANDARD CUSHIONS	



ZNTL SET 05

SET 06	
REF:	ZNTL SET 06
INCLUDED:	
2 x	ZNTL 100
3 x	ZNTL 75T
2 x	PIL ZNTL 100 (3pcs)
2 x	PIL ZNTL 75T... (1pc)
PRICE FOR STANDARD CUSHIONS	



ZNTL SET 06

CUSHIONS

OPEN-CELLED:

Open-celled cushion technology

Royal Botania cushions are 100% water and UV resistant.

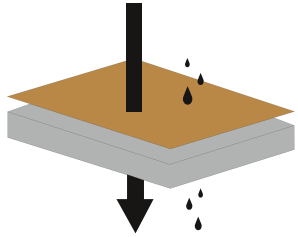
The foam has an open-celled structure, creating a high permeability level.

This means that when water gets in, it is easy for it to evaporate.

Your outdoor furniture cushions will dry very quickly after exposure to water or moisture.

During production of the foam, an anti-bacterial and anti-fungal treatment is applied.

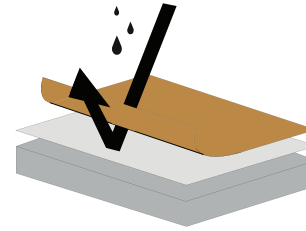
This is done without using CFC's, keeping the process environmentally friendly.



MEMBRANE:

Royal Botania cushions are created by laminating our membrane to high-performance textiles, then sealing them with an innovative solution for waterproof protection.

The Royal Botania membrane is the heart of all our cushions. The PTFE-layer contains over 9 billion microscopic pores per square inch. These pores are 20.000 times smaller than a water droplet, but 700 times larger than a water vapor molecule, which makes the Royal Botania membrane completely waterproof from the outside, while allowing perspiration to escape from the inside. The membrane consists of a MICRO-fiber, preventing the penetration of body oils, food or insect repellents that could otherwise penetrate the cushion.



PROTECTIVE COVERS

To protect your Royal Botania furniture from the elements when not used, we provide PU coated polyester covers for every element as well as for modular combinations. The latter are custom made to fit the lay-out of your lounge set.

The seams on those protective covers are sealed by silicone strips to prevent water from entering. Always make sure that the furniture and the cushions are completely dry before putting on the covers to avoid the formation of mould.

MAINTENANCE

Even the best of materials and components, will get dirty when placed outside. Even though our furniture is well protected against the elements, proper maintenance is a must. For that purpose we offer a wide array of maintenance products, all especially developed to make sure your furniture will stand out, even after many years outside. To select the right product for the right application, check our maintenance manual on www.royalbotania.com/maintenance

WARRANTY

Royal Botania products are made from the finest materials, and with the utmost care, so as to give you a lifetime of enjoyment. That is when correctly used and properly maintained. Hidden flaws in materials can never be excluded for 100%. These can eventually cause issues. In the event of quality issues arising from such defects, Royal Botania obviously takes its responsibility. Our warranty clauses can be found on www.royalbotania.com/warranty

TEAK & MAHOGANY

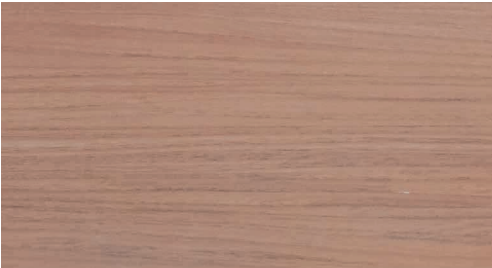
AS ROYAL BOTANIA NEVER COMPROMISES ON QUALITY, ONLY CAREFULLY SELECTED MATURE TEAKWOOD IS USED IN OUR PRODUCTS. ALL OF IT HARVESTED IN STRICT ACCORDANCE WITH OUR ENVIRONMENTAL POLICIES. TEAK WOOD'S RENOWNED DURABILITY IS DUE TO ITS HIGH CONTENT OF NATURAL OILS. THE LIMITED ABSORPTION OF MOISTURE PROTECTS THE WOOD FROM WARPING AND GIVES IT ENORMOUS STABILITY. IN ADDITION, TEAK IS HIGHLY RESISTANT TO ATTACKS BY PESTS. IT IS BECAUSE OF THESE QUALITIES, AS WELL AS ITS EXCEPTIONALLY ATTRACTIVE HUE AND STRUCTURE, THAT TEAK IS WIDELY CONSIDERED "THE NOBLEST OF ALL WOOD TYPES".

MAHOGANY IS A HARDWOOD WITH A REDDISH COLOUR THAT IS WIDELY USED FOR BOAT BUILDING, AS WELL AS FURNITURE MANUFACTURING.

TEAK
REF: W



OILED MAHOGANY
REF: MHOT

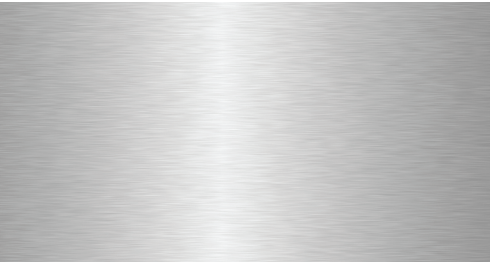


STAINLESS STEEL

STAINLESS STEEL IS A FERROUS ALLOY WITH INCREASED CORROSION RESISTANCE DUE TO THE ADDITION OF CHROME AND NICKEL. CHLORINE, THE GREATEST ENEMY OF STAINLESS STEEL, CAN CAUSE A TYPE OF CORROSION KNOWN AS "PITTING". FOR THIS REASON, IT IS RECOMMENDED THAT IN COASTAL LOCATIONS THE METAL BE GIVEN AN ELECTROPOLISHING TREATMENT, IN ORDER TO FURTHER INCREASE ITS RESISTANCE TO CORROSION. THE FURNITURE FRAMES OF THE WAVE IS SUPPLIED WITH AN ELECTROPOLISHED FINISH AS STANDARD.

FOR THE NINIX, O-ZON, QT & TABOELA RANGES WE RECOMMEND THE OPTIONAL ELECTROPOLISHING TREATMENT OF THE FRAME IF IT IS TO BE USED IN A CORROSIVE ENVIRONMENT.

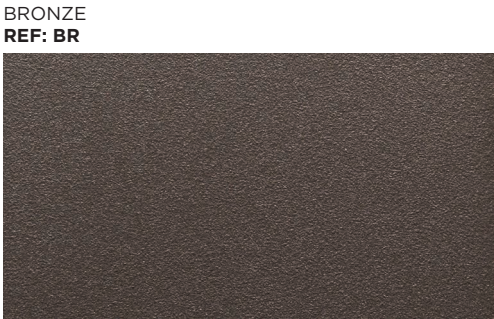
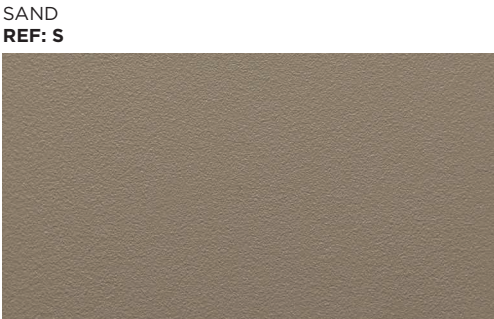
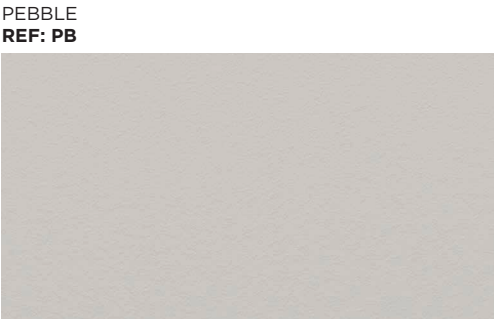
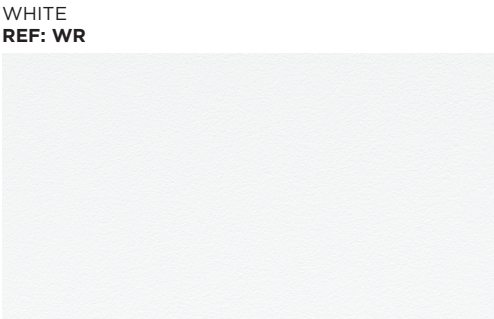
BRUSHED STAINLESS STEEL
REF: SS



ELECTROPOLISHED STAINLESS STEEL
REF: EP



POWDER COATING COLOURS



FIBER

OLEFIN FIBER IS A SYNTHETIC FIBER MADE FROM POLYPROPYLENE. THE ADVANTAGE OF THIS FIBER IS ITS STRENGTH, COLOUR FASTNESS AND COMFORT. ALSO IT IS VERY RESISTANT TO STAINING AND DIFFERENT WEATHER CONDITIONS.



CERAMIC

THE CERAMIC TOPS ARE MADE FROM NATURAL CLAYS, SO SMALL COLOUR GRADATIONS CAN OCCUR. THIS MAKES EACH TABLE UNIQUE.

WHITE
REF: WUM



CEMENTO LUMINOSO
REF: CL



PEARL GREY
REF: PG



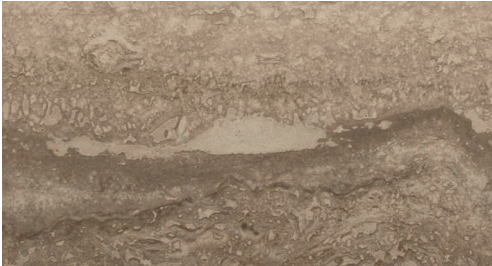
NERO MARQUINA
REF: NM



BIANCO STATUARIO
REF: BS



TRAVERTINO
REF: TR



TAUPE GREY
REF: TG



BLACK
REF: ZUM



CEPPO DOLOMITICA
REF: CD



TERRA SABBIA
REF: TS



TERRA MARRONE
REF: TM



CONCRETE

WE USE AN ULTRA-HIGH PERFORMANCE CONCRETE REINFORCED BY NATURAL MINERAL COMPONENTS AND ORGANIC FIBERS. THANKS TO ITS DISCONTINUOUS PORE STRUCTURE AND CRACK-BRIDGING FIBERS, IT IS VIRTUALLY IMPERVIOUS. PENETRATION OF CHLORIDE IONS IS ALSO SIGNIFICANTLY REDUCED AND THUS PERFORMS EXCEPTIONALLY WELL IN HIGHLY CORROSIVE ENVIRONMENTS SUCH AS NEAR BEACHES.

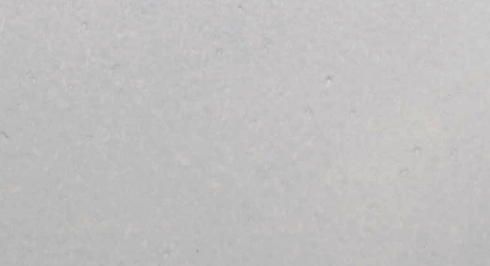
CEMENT GREY
REF: CG



ENAMELED LAVA STONES

LAVA STONES WITH A VITREOUS ENAMEL COATING. FUSED AT 850°C THE ENAMEL BECOMES VERY HARD AND EXTREMELY RESISTANT TO ALL WEATHER CONDITIONS.

PEARL
REF: PE



MOON
REF: MO



LAVA
REF: LA



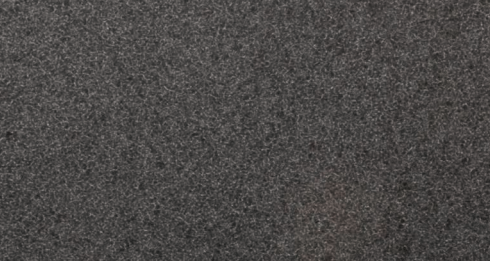
SLATE
REF: SL



JADE
REF: JA



DUSK
REF: DU

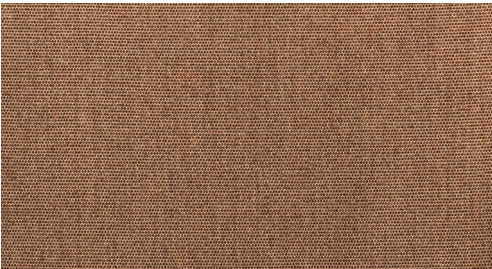


CATEGORY A FABRICS ACRYLIC

WHITE
REF: ...WU - CAT.: A - ACRYLIC



COCONUT
REF: ...CC - CAT.: A - ACRYLIC



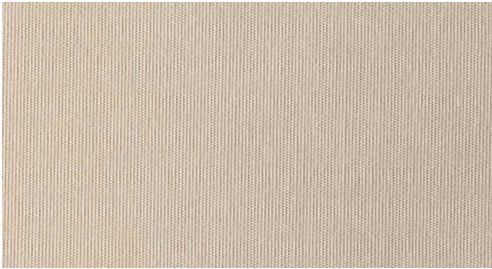
CAPPUCCINO
REF: ...CAU - CAT.: A - ACRYLIC



ROCK
REF: ...ROU - CAT.: A - ACRYLIC



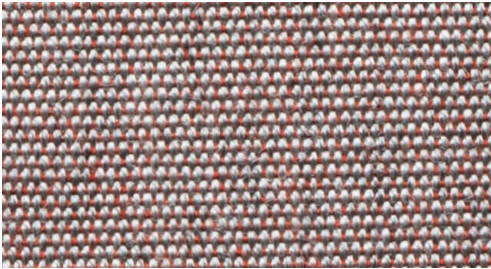
ECRU
REF: ...EU - CAT.: A - ACRYLIC



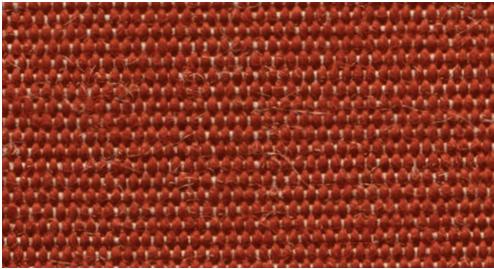
NAVY BLUE
REF: ...NBU - CAT.: A - ACRYLIC



ROSE
REF: ...RO - CAT.: A - ACRYLIC



TERRA
REF: ...TER - CAT.: A - ACRYLIC



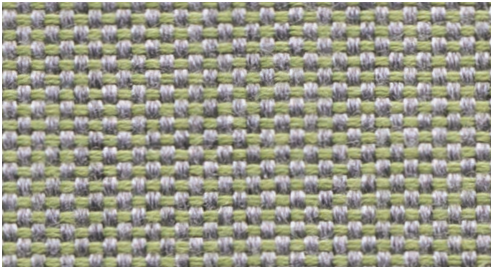
BLACK
REF: ...ZU - CAT.: A - ACRYLIC



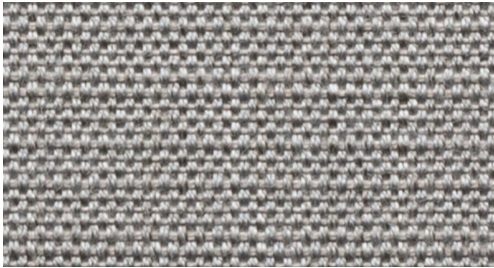
CHOCOLAT LINEN
REF: ...CHL - CAT.: A - ACRYLIC



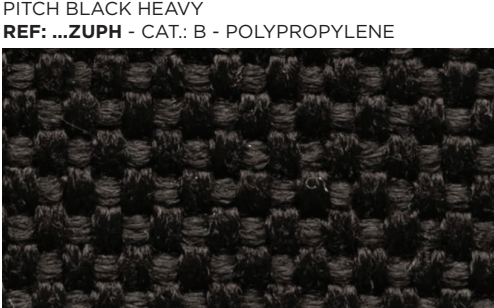
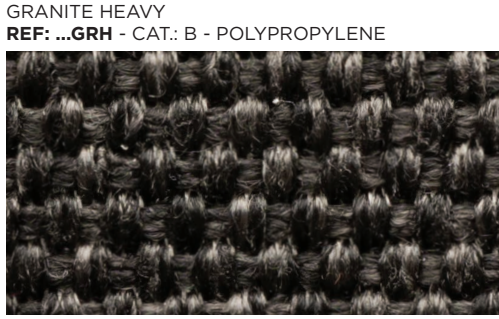
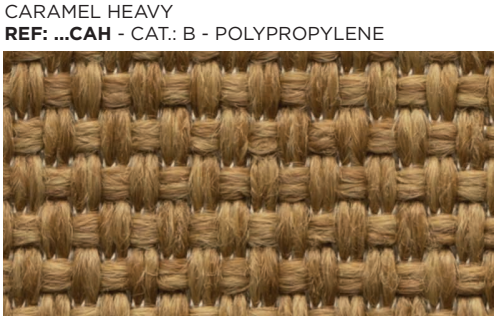
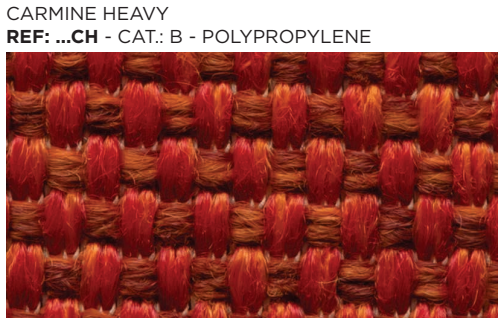
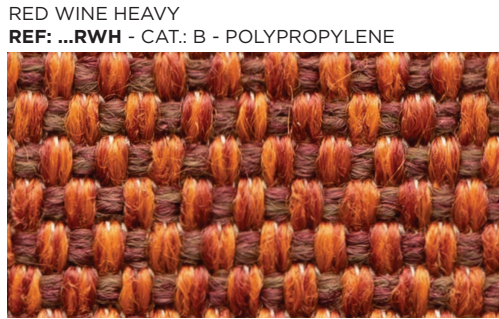
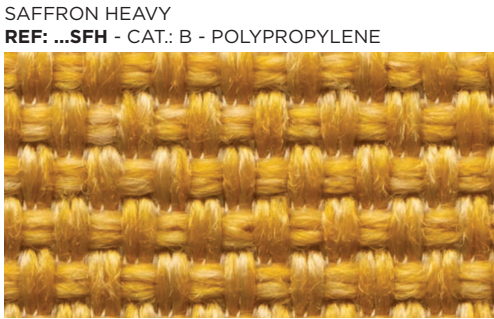
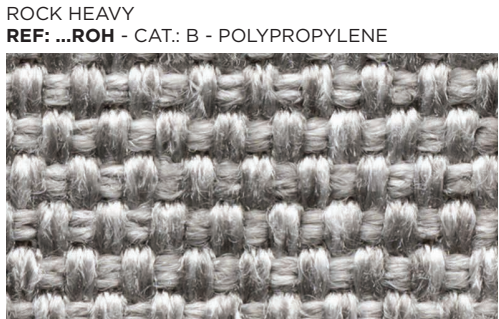
SAGE LINEN
REF: ...SL - CAT.: A - ACRYLIC



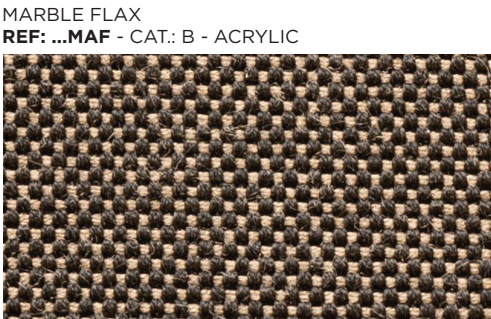
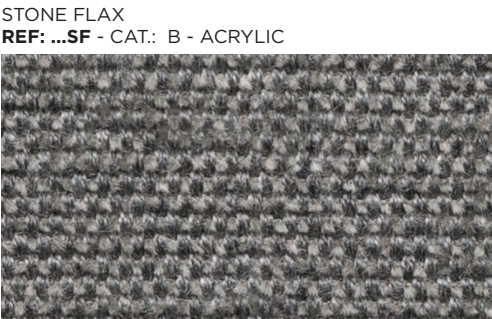
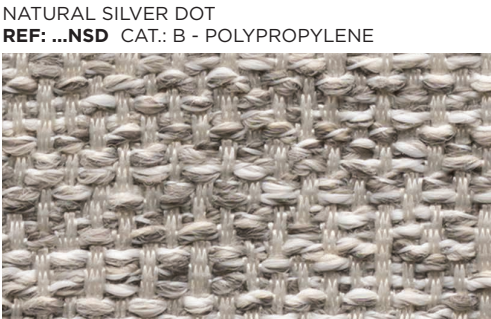
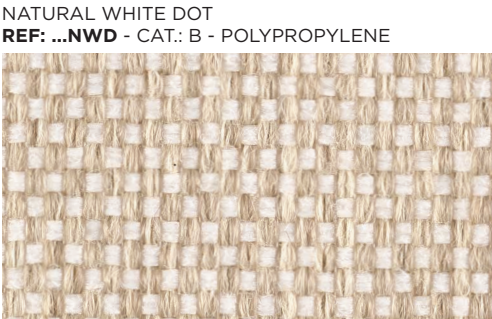
FROST LINEN
REF: ...FL - CAT.: A - ACRYLIC



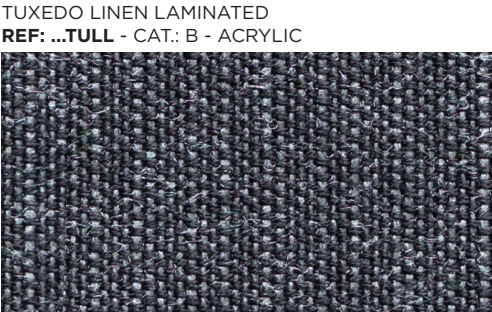
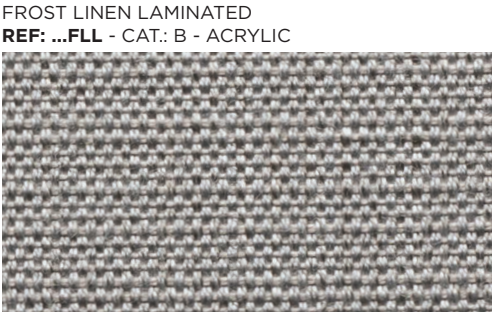
CATEGORY B FABRICS ACRYLIC & POLYPROPYLENE



CATEGORY B FABRICS ACRYLIC & POLYPROPYLENE



CATEGORY B/C LAMINATED FABRICS ACRYLIC

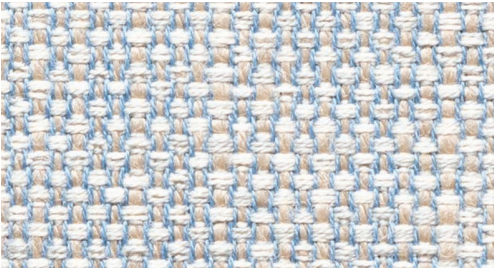


CATEGORY C FABRICS ACRYLIC & POLYPROPYLENE

PASTEL SAND
REF: ...PAS - CAT.: C - ACRYLIC



PASTEL BLUE
REF: ...PAB - CAT.: C - ACRYLIC



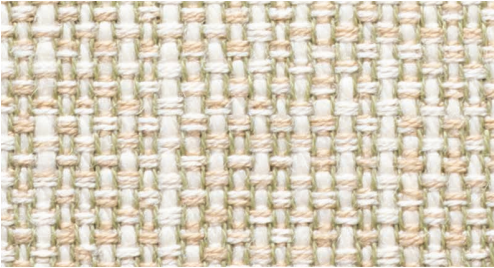
PASTEL YELLOW
REF: ...PAY - CAT.: C - ACRYLIC



PASTEL COCONUT
REF: ...PAC - CAT.: C - ACRYLIC



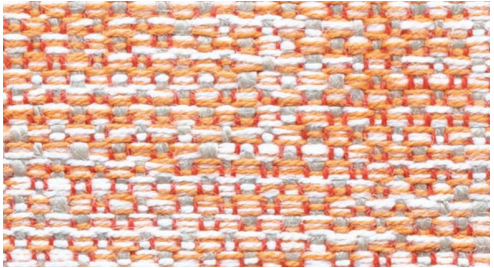
PASTEL GREEN
REF: ...PAG - CAT.: C - ACRYLIC



PASTEL ORANGE
REF: ...PAO - CAT.: C - ACRYLIC



PASTEL RED
REF: ...PAR - CAT.: C - ACRYLIC



MOSS
REF: ...MOS - CAT.: C - POLYPROPYLENE



BOUCLE SAND
REF: ...BOS - CAT.: C - POLYPROPYLENE



BOUCLE WHITE
REF: ...BOW - CAT.: C - POLYPROPYLENE



BOUCLE GREY
REF: ...BOG - CAT.: C - POLYPROPYLENE



BOUCLE BLUE
REF: ...BOB - CAT.: C - POLYPROPYLENE



ECRU LINEN
REF: ...EUL - CAT.: C - ACRYLIC



JUNIPER GREEN
REF: ...JG - CAT.: C - ACRYLIC



AUBERGINE MESH
REF: ...AUM - CAT.: C - ACRYLIC



NIGHT BLUE
REF: ...NB - CAT.: C - ACRYLIC



CATEGORY C FABRICS ACRYLIC & POLYPROPYLENE

VANILLE VELVET
REF: ...VAV - CAT.: C - ACRYLIC



ECRU VELVET
REF: ...EUV - CAT.: C - ACRYLIC



SALMON VELVET
REF: ...SAV - CAT.: C - ACRYLIC



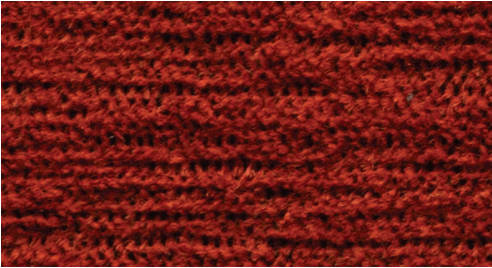
SAFFRON VELVET
REF: ...SFV - CAT.: C - ACRYLIC



DARK BROWN VELVET
REF: ...DBV - CAT.: C - ACRYLIC



TERRA VELVET
REF: ...TEV - CAT.: C - ACRYLIC



AUBERGINE VELVET
REF: ...AUV - CAT.: C - ACRYLIC



ICE BLUE VELVET
REF: ...IBV - CAT.: C - ACRYLIC



SILVER VELVET
REF: ...SIV - CAT.: C - ACRYLIC



IRON GREY VELVET
REF: ...IGV - CAT.: C - ACRYLIC



ORANGE CHEVRON
REF: ...ORC - CAT.: C - POLYPROPYLENE



OLD ROSE
REF: ...OLR - CAT.: C - POLYPROPYLENE



LIGHT BOUCLE WHITE
REF: ...LBW - CAT.: C - POLYPROPYLENE



LIGHT BOUCLE SAND
REF: ...LBS - CAT.: C - ACRYLIC



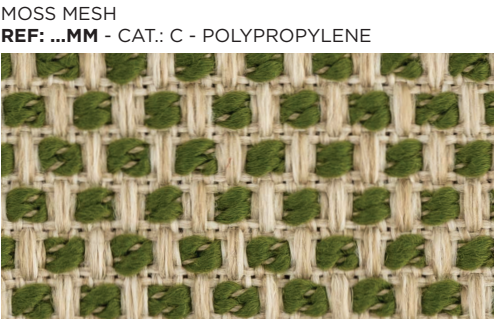
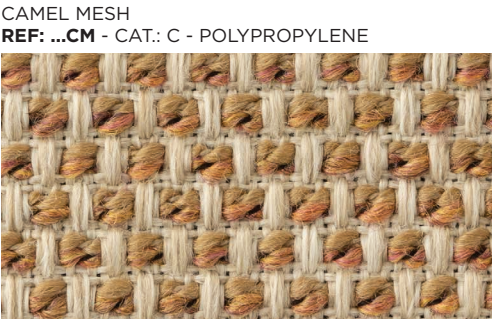
LIGHT BOUCLE GREY
REF: ...LBG - CAT.: C - POLYPROPYLENE



GREY MESH
REF: ...GM - CAT.: C - ACRYLIC

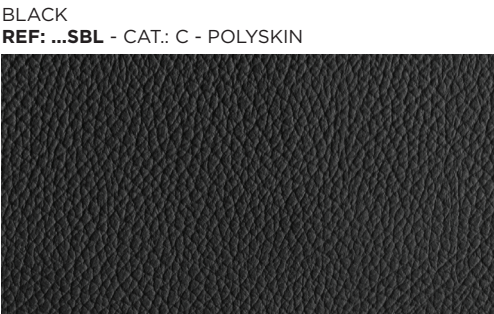


CATEGORY C FABRICS ACRYLIC & POLYPROPYLENE



CATEGORY C FABRICS POLYSKIN

ONLY AVAILABLE FOR STRAPPY, STYLETTO & OSTREA COLLECTION!
POLYSKIN IS A SYNTHETIC ALL WEATHER LEATHER IMITATION THAT IS EXTREMELY UV AND WATER RESISTANT.



BATYLINE

THE SLINGS ON METAL FRAMED CHAIRS AND LOUNGERS ARE MADE OF BATYLINE® FABRICS, A WOVEN POLYESTER FIBER PROTECTED BY A PVC COATING. THIS COATING GUARANTEES EXCEPTIONAL RESISTANCE TO CLIMATIC CONDITIONS AND UV EXPOSURE. THE FACT THAT THERE IS NO MOISTURE ABSORPTION RESULTS IN QUICK-DRYING, LITTLE SENSITIVITY TO STAINING AND EASY CLEANING.

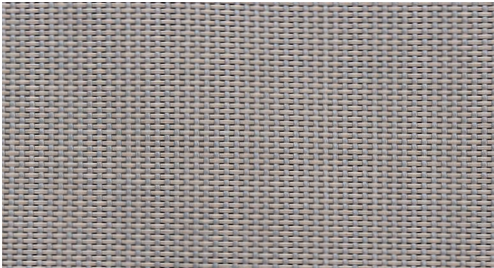
WHITE
REF: ...WU



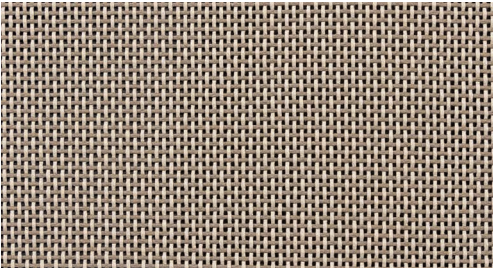
WHITE (FOR NNX(L) - OZN - WV)
REF: ...WUC



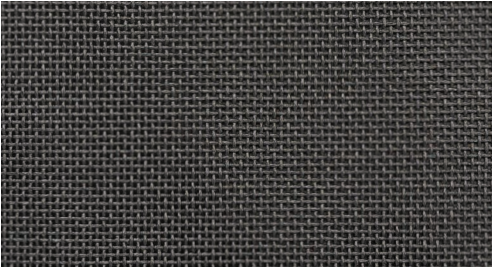
PEARL GREY
REF: ...PG



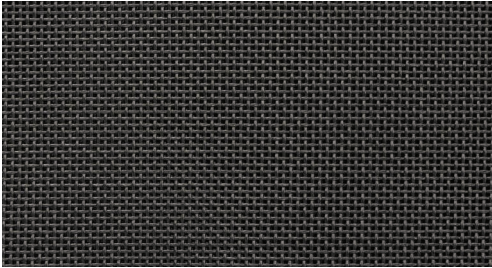
CAPPUCCINO
REF: ...CAU



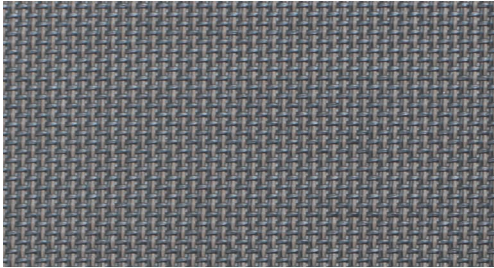
BLACK
REF: ...ZU



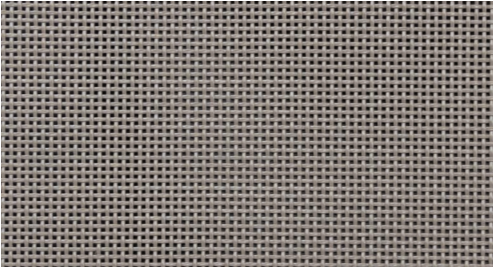
BLACK (FOR NNX(L) - OZN - WV)
REF: ...ZUC



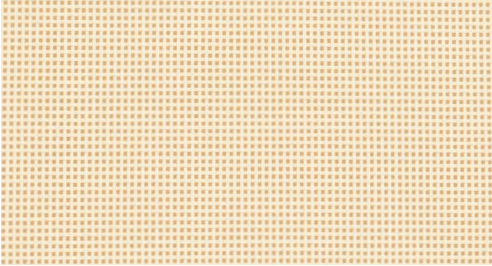
GRAPHITE
REF: ...GRP



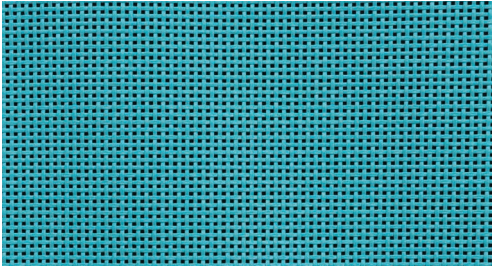
BROWN
REF: ...BRU



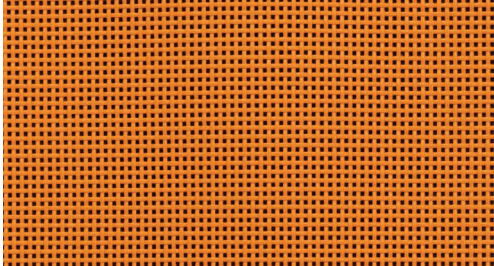
ECRU
REF: ...EU



TURQUOISE
REF: ...TQF



ORANGE
REF: ...ORU



PARASOL FABRICS

FOR OUR SHADY AND BLOOM PARASOL WE USE A THICKER FABRIC WITH A SPECIAL COATING TO FURTHER PROTECT THEM FROM THE ELEMENTS.

WHITE
REF: ...WU - CAT.: A - ACRYLIC



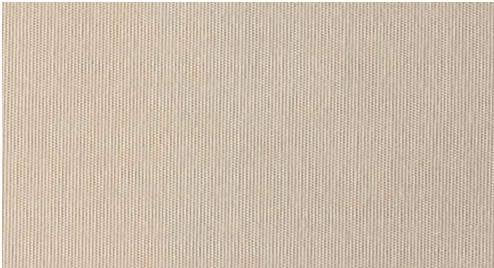
BLACK
REF: ...ZU - CAT.: A - ACRYLIC



CAPPUCCINO
REF: ...CAU - CAT.: A - ACRYLIC



ECRU
REF: ...EU - CAT.: A - ACRYLIC



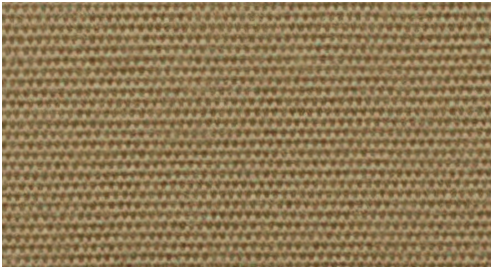
BLUE
REF: ...BU - CAT.: C - ACRYLIC



FONDANT
REF: ...FOU - CAT.: A - ACRYLIC



MOKKA
REF: ...MU - CAT.: A - ACRYLIC



ROCK
REF: ...ROU - CAT.: A - ACRYLIC



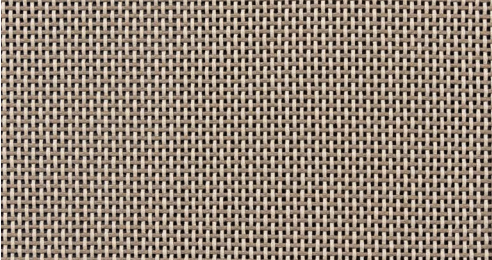
PARASOL BATYLINE

THE BATYLINE FOR OUR OAZZ IS WOVEN THIGHT AND GIVEN A COATING TO FURTHER PROTECT THEM FROM THE ELEMENTS.

WHITE
REF: ...WU



CAPPUCCINO
REF: ...CAU



BLACK
REF: ...ZU

