

# PARASOLS



# PALMA SPECIFICATIONS

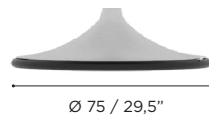
Design by Kris Van Puyvelde



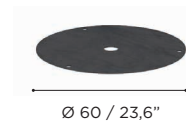
PALMA	
REF:	PLM 300...
WEIGHT:	18 kg / 39,68 Lbs
INFO:	ASSEMBLING NEEDED COVERBAG INCLUDED BASE & BALLAST <b>NOT</b> INCLUDED



PALMA HEAVY BASE	
REF:	PLM V 75...
WEIGHT:	71 kg / 156,52 Lbs



HEAVY BALLAST	
REF:	PLM 300 BALLAST H
WEIGHT:	13 kg / 16,5 Lbs



STANDARD / ON REQUEST

		COATED ALUMINIUM		
		WR	S	A
TEXTILE (CATA)	WU	PLM 300 WRWU •	PLM 300 SWU •	PLM 300 AWU •
	CAU	PLM 300 WRCAU •	PLM 300 SCAU •	PLM 300 ACAU •
	ZU	PLM 300 WRZU •	PLM 300 SZU •	PLM 300 AZU •
	ROU	PLM 300 WRROU •	PLM 300 SROU •	PLM 300 AROU •
	RO	PLM 300 WRRO •	PLM 300 SRO •	PLM 300 ARO •
	SL	PLM 300 WRSL •	PLM 300 SSL •	PLM 300 ASL •

		COATED ALUMINIUM		
		WR	S	A
	PLMV 75 RWR •	PLMV 75 RS •	PLMV 75 RA •	

PLM 300 BALLAST H	
	•

- FEATURES:
- \* ROUND PLATE IN GALVANIZED STEEL
  - \* 4 SCREW HOLES
  - \* FOR ADDING WEIGHT TO PALMA BASE: PLMV75...

## TEAK & MAHOGANY

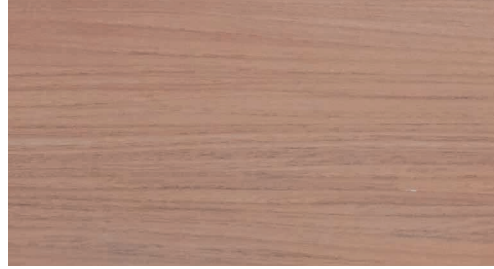
AS ROYAL BOTANIA NEVER COMPROMISES ON QUALITY, ONLY CAREFULLY SELECTED MATURE TEAKWOOD IS USED IN OUR PRODUCTS. ALL OF IT HARVESTED IN STRICT ACCORDANCE WITH OUR ENVIRONMENTAL POLICIES. TEAK WOOD'S RENOWNED DURABILITY IS DUE TO ITS HIGH CONTENT OF NATURAL OILS. THE LIMITED ABSORPTION OF MOISTURE PROTECTS THE WOOD FROM WARPING AND GIVES IT ENORMOUS STABILITY. IN ADDITION, TEAK IS HIGHLY RESISTANT TO ATTACKS BY PESTS. IT IS BECAUSE OF THESE QUALITIES, AS WELL AS ITS EXCEPTIONALLY ATTRACTIVE HUE AND STRUCTURE, THAT TEAK IS WIDELY CONSIDERED "THE NOBLEST OF ALL WOOD TYPES".

MAHOGANY IS A HARDWOOD WITH A REDDISH COLOUR THAT IS WIDELY USED FOR BOAT BUILDING, AS WELL AS FURNITURE MANUFACTURING.

TEAK  
REF: W



OILED MAHOGANY  
REF: MHOT

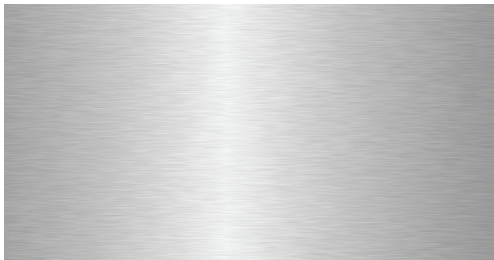


## STAINLESS STEEL

STAINLESS STEEL IS A FERROUS ALLOY WITH INCREASED CORROSION RESISTANCE DUE TO THE ADDITION OF CHROME AND NICKEL. CHLORINE, THE GREATEST ENEMY OF STAINLESS STEEL, CAN CAUSE A TYPE OF CORROSION KNOWN AS "PITTING". FOR THIS REASON, IT IS RECOMMENDED THAT IN COASTAL LOCATIONS THE METAL BE GIVEN AN ELECTROPOLISHING TREATMENT, IN ORDER TO FURTHER INCREASE ITS RESISTANCE TO CORROSION. THE FURNITURE FRAMES OF THE WAVE IS SUPPLIED WITH AN ELECTROPOLISHED FINISH AS STANDARD.

FOR THE NINIX, O-ZON, QT & TABOELA RANGES WE RECOMMEND THE OPTIONAL ELECTROPOLISHING TREATMENT OF THE FRAME IF IT IS TO BE USED IN A CORROSIVE ENVIRONMENT.

BRUSHED STAINLESS STEEL  
REF: SS

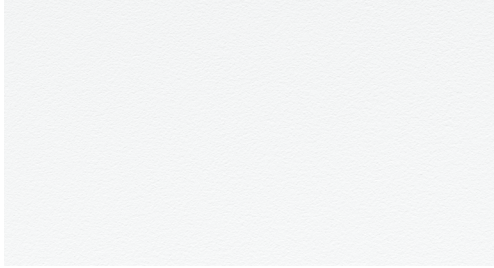


ELECTROPOLISHED STAINLESS STEEL  
REF: EP

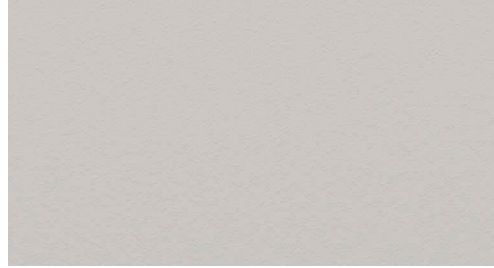


## POWDER COATING COLOURS

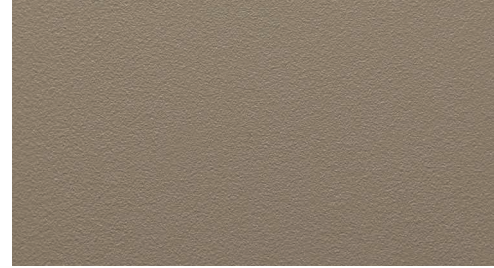
WHITE  
REF: WR



PEBBLE  
REF: PB



SAND  
REF: S



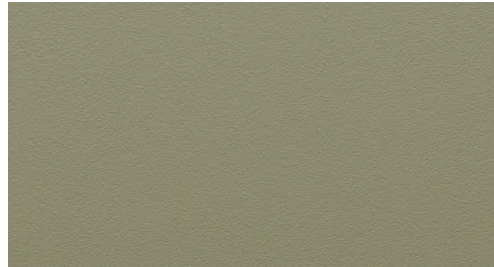
BRONZE  
REF: BR



ANTHRACITE  
REF: A



OLIVE  
REF: OL



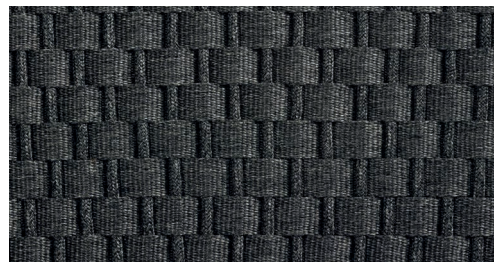
## FIBER

OLEFIN FIBER IS A SYNTHETIC FIBER MADE FROM POLYPROPYLENE. THE ADVANTAGE OF THIS FIBER IS ITS STRENGTH, COLOUR FASTNESS AND COMFORT. ALSO IT IS VERY RESISTANT TO STAINING AND DIFFERENT WEATHER CONDITIONS.

JIVE COLLECTION (OLEFIN FIBER)



SAMBA COLLECTION (OLEFIN FIBER)



CALYPSO COLLECTION (POLYTHYLENE FIBER)



FENSI COLLECTION



# CERAMIC

THE CERAMIC TOPS ARE MADE FROM NATURAL CLAYS, SO SMALL COLOUR GRADATIONS CAN OCCUR. THIS MAKES EACH TABLE UNIQUE.

WHITE  
REF: WUM



CEMENTO LUMINOSO  
REF: CL



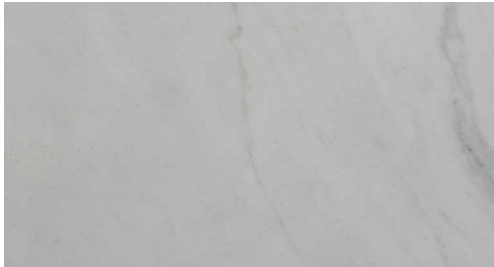
PEARL GREY  
REF: PG



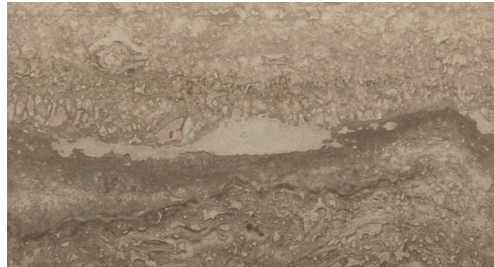
NERO MARQUINA  
REF: NM



BIANCO STATUARIO  
REF: BS



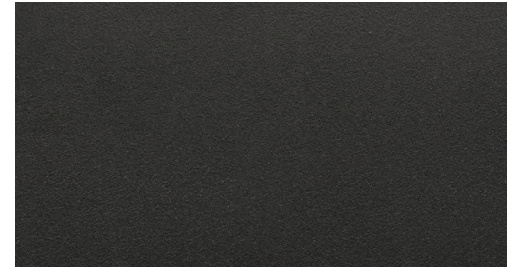
TRAVERTINO  
REF: TR



TAUPE GREY  
REF: TG



BLACK  
REF: ZUM



CEPPO DOLOMITICA  
REF: CD



TERRA SABBIA  
REF: TS



TERRA MARRONE  
REF: TM



## CONCRETE

WE USE AN ULTRA-HIGH PERFORMANCE CONCRETE REINFORCED BY NATURAL MINERAL COMPONENTS AND ORGANIC FIBERS. THANKS TO ITS DISCONTINUOUS PORE STRUCTURE AND CRACK-BRIDGING FIBERS, IT IS VIRTUALLY IMPERVIOUS. PENETRATION OF CHLORIDE IONS IS ALSO SIGNIFICANTLY REDUCED AND THUS PERFORMS EXCEPTIONALLY WELL IN HIGHLY CORROSIVE ENVIRONMENTS SUCH AS NEAR BEACHES.

CEMENT GREY

REF: CG



## ENAMELED LAVA STONES

LAVA STONES WITH A VITREOUS ENAMEL COATING. FUSED AT 850°C THE ENAMEL BECOMES VERY HARD AND EXTREMELY RESISTANT TO ALL WEATHER CONDITIONS.

PEARL

REF: PE



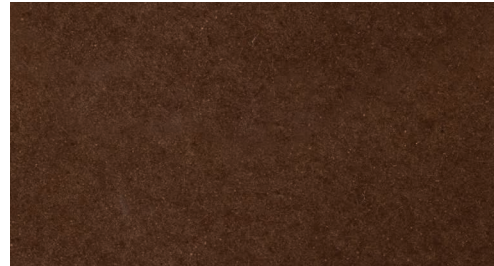
MOON

REF: MO



LAVA

REF: LA



SLATE

REF: SL



JADE

REF: JA



DUSK

REF: DU

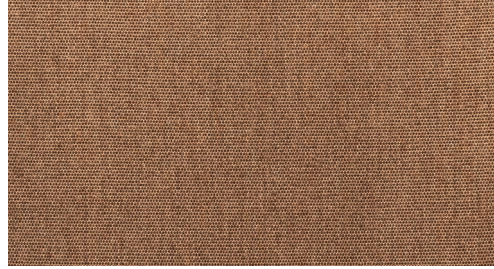


## CATEGORY A FABRICS ACRYLIC

WHITE  
REF: ...WU - CAT.: A - ACRYLIC



COCONUT  
REF: ...CC - CAT.: A - ACRYLIC



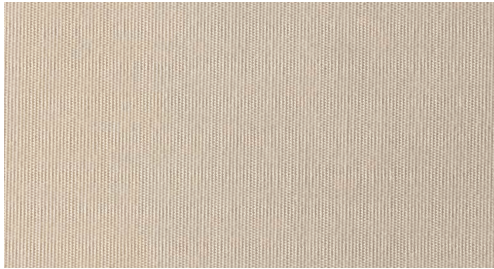
CAPPUCCINO  
REF: ...CAU - CAT.: A - ACRYLIC



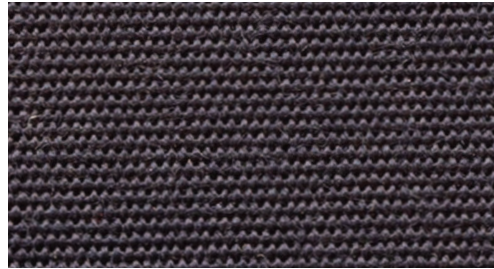
ROCK  
REF: ...ROU - CAT.: A - ACRYLIC



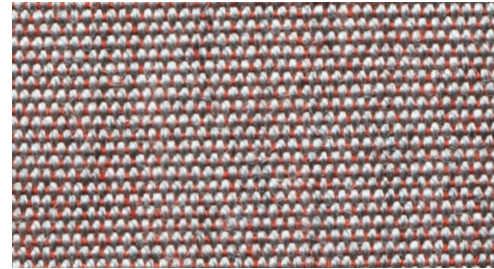
ECRU  
REF: ...EU - CAT.: A - ACRYLIC



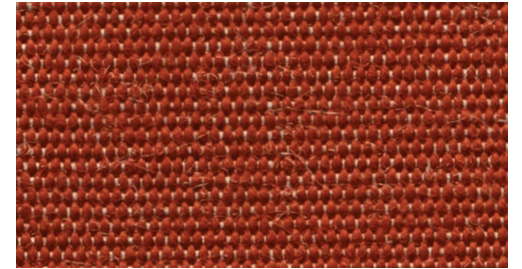
NAVY BLUE  
REF: ...NBU - CAT.: A - ACRYLIC



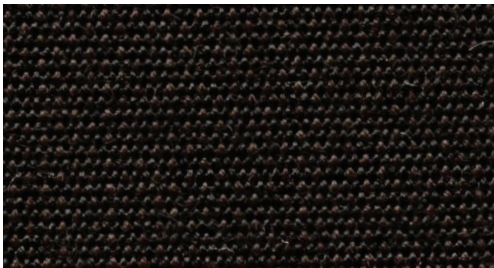
ROSE  
REF: ...RO - CAT.: A - ACRYLIC



TERRA  
REF: ...TER - CAT.: A - ACRYLIC



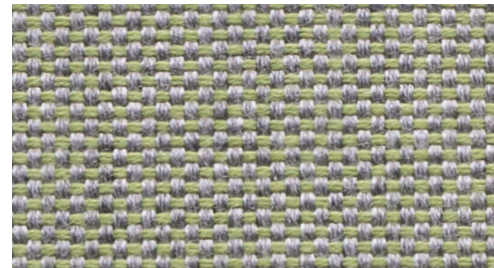
BLACK  
REF: ...ZU - CAT.: A - ACRYLIC



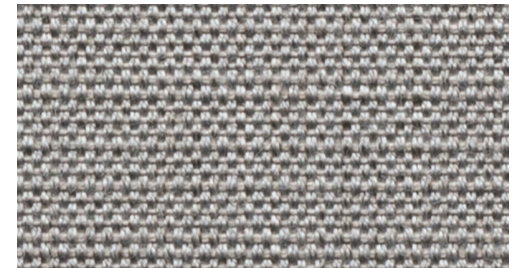
CHOCOLAT LINEN  
REF: ...CHL - CAT.: A - ACRYLIC



SAGE LINEN  
REF: ...SL - CAT.: A - ACRYLIC



FROST LINEN  
REF: ...FL - CAT.: A - ACRYLIC



## CATEGORY B FABRICS ACRYLIC & POLYPROPYLENE

WHITE HEAVY  
REF: ...WAH - CAT.: B - POLYPROPYLENE



LIGHT BLUE HEAVY  
REF: ...LBH - CAT.: B - POLYPROPYLENE



AZURE BLUE HEAVY  
REF: ...AZH - CAT.: B - POLYPROPYLENE



ROCK HEAVY  
REF: ...ROH - CAT.: B - POLYPROPYLENE



SAND HEAVY  
REF: ...SAH - CAT.: B - POLYPROPYLENE



SAFFRON HEAVY  
REF: ...SFH - CAT.: B - POLYPROPYLENE



RED WINE HEAVY  
REF: ...RWH - CAT.: B - POLYPROPYLENE



CARMINE HEAVY  
REF: ...CH - CAT.: B - POLYPROPYLENE



MOSS HEAVY  
REF: ...MH - CAT.: B - POLYPROPYLENE



CARAMEL HEAVY  
REF: ...CAH - CAT.: B - POLYPROPYLENE



AUBERGINE HEAVY  
REF: ...AUH - CAT.: B - POLYPROPYLENE



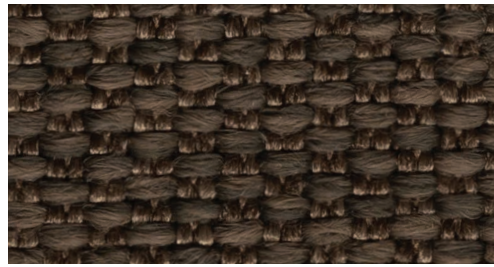
GRANITE HEAVY  
REF: ...GRH - CAT.: B - POLYPROPYLENE



PITCH BLACK HEAVY  
REF: ...ZUPH - CAT.: B - POLYPROPYLENE



DARK BROWN TWIN  
REF: ...DBT - CAT.: B - POLYPROPYLENE



WHITE TWIN  
REF: ...WUT - CAT.: B - POLYPROPYLENE





## CATEGORY B FABRICS ACRYLIC & POLYPROPYLENE

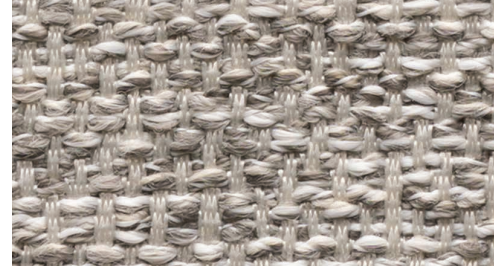
NATURAL WHITE DOT  
REF: ...NWD - CAT.: B - POLYPROPYLENE



NATURAL GREY DOT  
REF: ...NGD - CAT.: B - POLYPROPYLENE



NATURAL SILVER DOT  
REF: ...NSD CAT.: B - POLYPROPYLENE



NATURAL ECRU DOT  
REF: ...NED - CAT.: B - POLYPROPYLENE



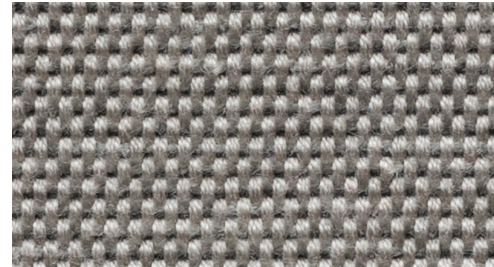
NATURAL LINEN DOT  
REF: ...NLD - CAT.: B - POLYPROPYLENE



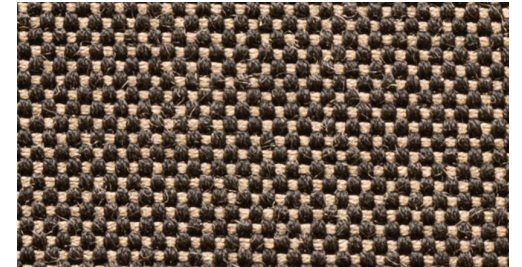
STONE FLAX  
REF: ...SF - CAT.: B - ACRYLIC



DESERT STONE FLAX  
REF: ...DSF - CAT.: B - ACRYLIC



MARBLE FLAX  
REF: ...MAF - CAT.: B - ACRYLIC

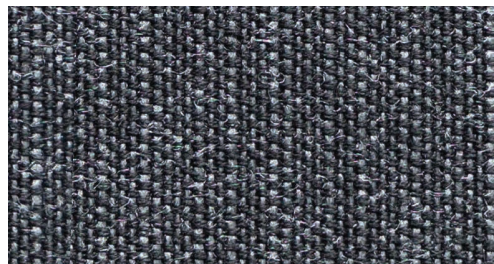


## CATEGORY B/C LAMINATED FABRICS ACRYLIC

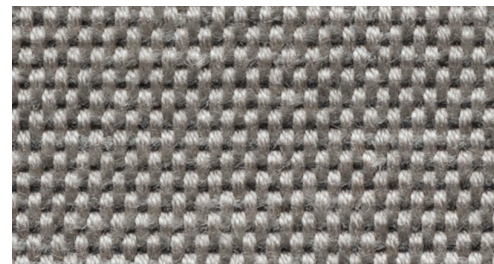
FROST LINEN LAMINATED  
REF: ...FLL - CAT.: B - ACRYLIC



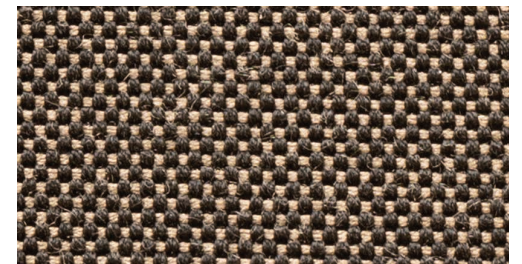
TUXEDO LINEN LAMINATED  
REF: ...TULL - CAT.: B - ACRYLIC



DESERT STONE FLAX LAMINATED  
REF: ...DSFL CAT.: C - ACRYLIC



MARBLE FLAX LAMINATED  
REF: ...MAFL CAT.: C - ACRYLIC

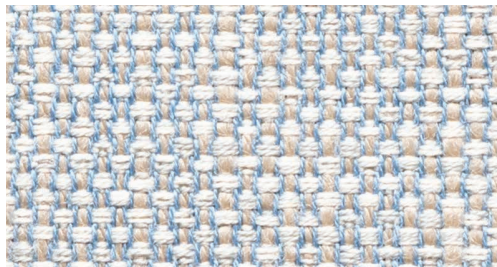


## CATEGORY C FABRICS ACRYLIC & POLYPROPYLENE

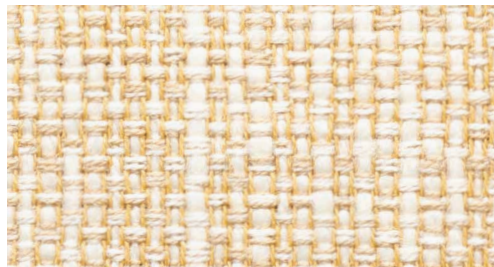
PASTEL SAND  
REF: ...PAS - CAT.: C - ACRYLIC



PASTEL BLUE  
REF: ...PAB - CAT.: C - ACRYLIC



PASTEL YELLOW  
REF: ...PAY - CAT.: C - ACRYLIC



PASTEL COCONUT  
REF: ...PAC - CAT.: C - ACRYLIC



PASTEL GREEN  
REF: ...PAG - CAT.: C - ACRYLIC



PASTEL ORANGE  
REF: ...PAO - CAT.: C - ACRYLIC



PASTEL RED  
REF: ...PAR - CAT.: C - ACRYLIC



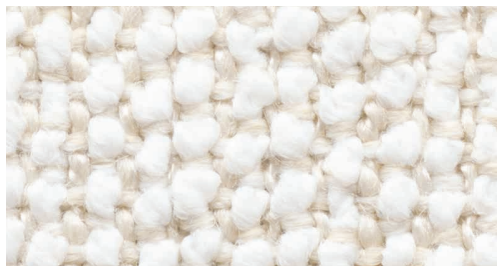
MOSS  
REF: ...MOS - CAT.: C - POLYPROPYLENE



BOUCLE SAND  
REF: ...BOS - CAT.: C - POLYPROPYLENE



BOUCLE WHITE  
REF: ...BOW - CAT.: C - POLYPROPYLENE



BOUCLE GREY  
REF: ...BOG - CAT.: C - POLYPROPYLENE



BOUCLE BLUE  
REF: ...BOB - CAT.: C - POLYPROPYLENE



ECRU LINEN  
REF: ...EUL - CAT.: C - ACRYLIC



JUNIPER GREEN  
REF: ...JG - CAT.: C - ACRYLIC



AUBERGINE MESH  
REF: ...AUM - CAT.: C - ACRYLIC



NIGHT BLUE  
REF: ...NB - CAT.: C - ACRYLIC



## CATEGORY C FABRICS ACRYLIC & POLYPROPYLENE

VANILLE VELVET  
REF: ...VAV - CAT.: C - ACRYLIC



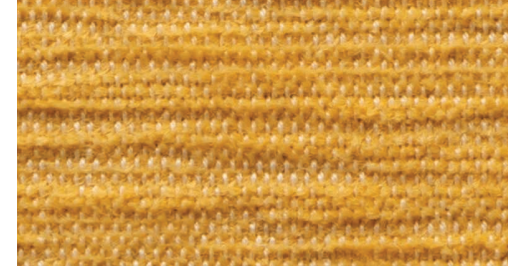
ECRU VELVET  
REF: ...EUV - CAT.: C - ACRYLIC



SALMON VELVET  
REF: ...SAV - CAT.: C - ACRYLIC



SAFFRON VELVET  
REF: ...SFV - CAT.: C - ACRYLIC



DARK BROWN VELVET  
REF: ...DBV - CAT.: C - ACRYLIC



TERRA VELVET  
REF: ...TEV - CAT.: C - ACRYLIC



AUBERGINE VELVET  
REF: ...AUV - CAT.: C - ACRYLIC



ICE BLUE VELVET  
REF: ...IBV - CAT.: C - ACRYLIC



SILVER VELVET  
REF: ...SIV - CAT.: C - ACRYLIC



IRON GREY VELVET  
REF: ...IGV - CAT.: C - ACRYLIC



ORANGE CHEVRON  
REF: ...ORC - CAT.: C - POLYPROPYLENE



OLD ROSE  
REF: ...OLR - CAT.: C - POLYPROPYLENE



LIGHT BOUCLE WHITE  
REF: ...LBW - CAT.: C - POLYPROPYLENE



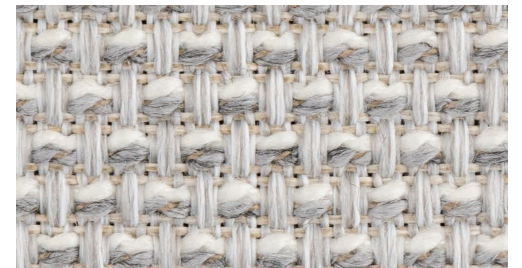
LIGHT BOUCLE SAND  
REF: ...LBS - CAT.: C - ACRYLIC



LIGHT BOUCLE GREY  
REF: ...LBG - CAT.: C - POLYPROPYLENE



GREY MESH  
REF: ...GM - CAT.: C - ACRYLIC

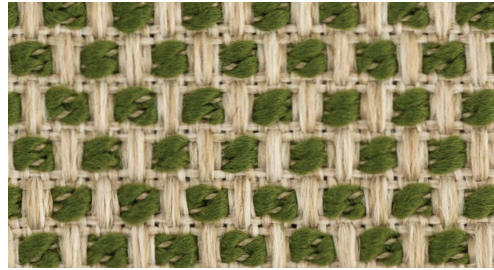


## CATEGORY C FABRICS ACRYLIC & POLYPROPYLENE

CAMEL MESH  
REF: ...CM - CAT.: C - POLYPROPYLENE



MOSS MESH  
REF: ...MM - CAT.: C - POLYPROPYLENE



SAND MESH  
REF: ...SM - CAT.: C - POLYPROPYLENE



## CATEGORY C FABRICS POLYSKIN

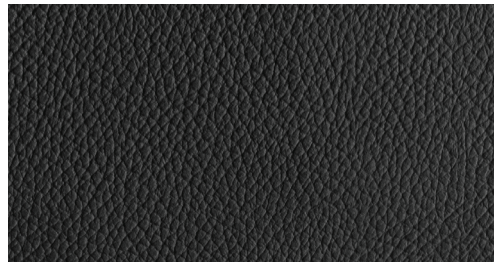
ONLY AVAILABLE FOR STRAPPY, STYLETTO & OSTREA COLLECTION!

POLYSKIN IS A SYNTHETIC ALL WEATHER LEATHER IMITATION THAT IS EXTREMELY UV AND WATER RESISTANT.

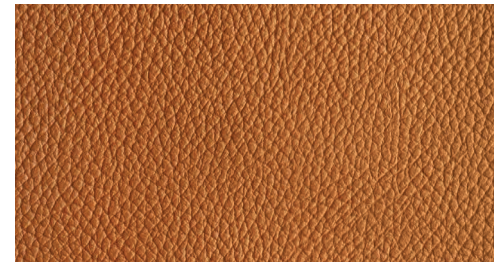
CAPPUCCINO  
REF: ...SCA - CAT.: C - POLYSKIN



BLACK  
REF: ...SBL - CAT.: C - POLYSKIN



COGNAC  
REF: ...SCO - CAT.: C - POLYSKIN



## BATYLINE

THE SLINGS ON METAL FRAMED CHAIRS AND LOUNGERS ARE MADE OF BATYLINE® FABRICS, A WOVEN POLYESTER FIBER PROTECTED BY A PVC COATING. THIS COATING GUARANTEES EXCEPTIONAL RESISTANCE TO CLIMATIC CONDITIONS AND UV EXPOSURE. THE FACT THAT THERE IS NO MOISTURE ABSORPTION RESULTS IN QUICK-DRYING, LITTLE SENSITIVITY TO STAINING AND EASY CLEANING.

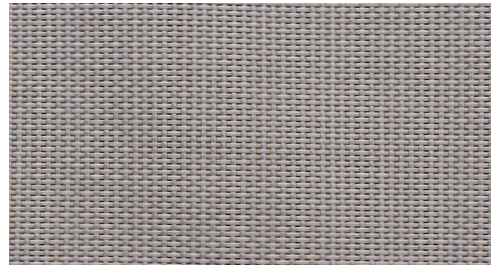
WHITE  
REF: ...WU



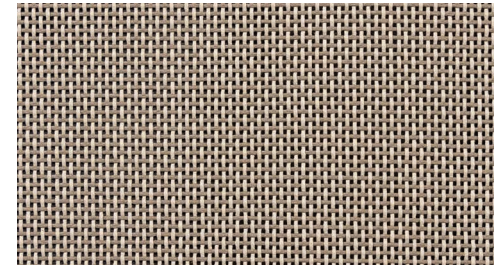
WHITE (FOR NNX(L) - OZN - WV)  
REF: ...WUC



PEARL GREY  
REF: ...PG



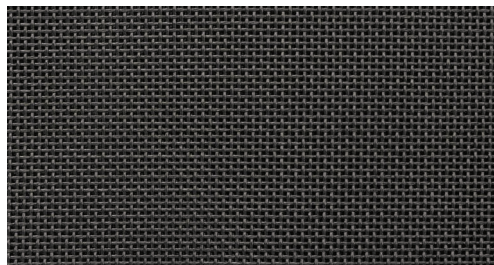
CAPPUCCINO  
REF: ...CAU



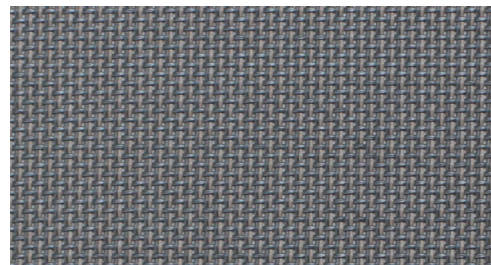
BLACK  
REF: ...ZU



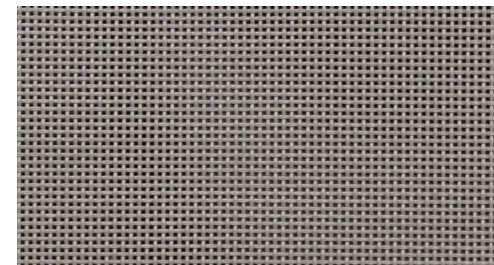
BLACK (FOR NNX(L) - OZN - WV)  
REF: ...ZUC



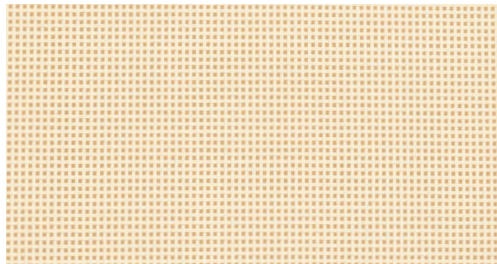
GRAPHITE  
REF: ...GRP



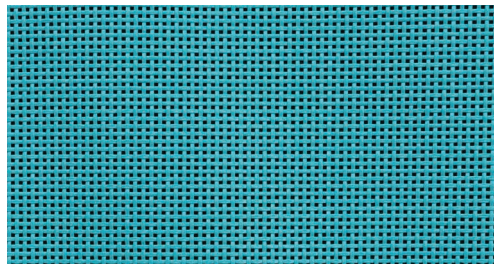
BROWN  
REF: ...BRU



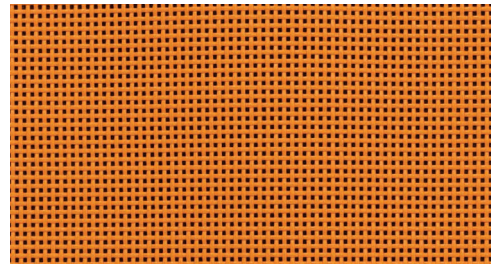
ECRU  
REF: ...EU



TURQUOISE  
REF: ...TQF



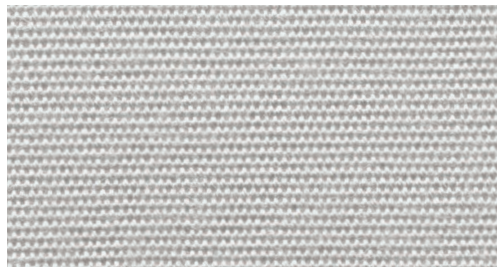
ORANGE  
REF: ...ORU



## PARASOL FABRICS

FOR OUR SHADY AND BLOOM PARASOL WE USE A THICKER FABRIC WITH A SPECIAL COATING TO FURTHER PROTECT THEM FROM THE ELEMENTS.

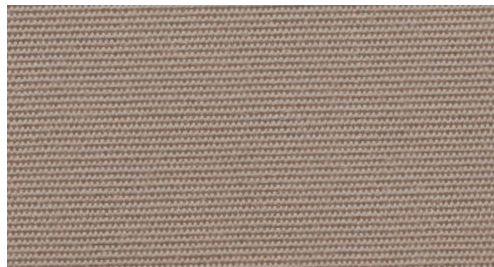
WHITE  
REF: ...WU - CAT.: A - ACRYLIC



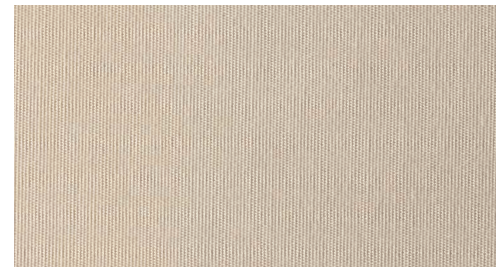
BLACK  
REF: ...ZU - CAT.: A - ACRYLIC



CAPPUCCINO  
REF: ...CAU - CAT.: A - ACRYLIC



ECRU  
REF: ...EU - CAT.: A - ACRYLIC



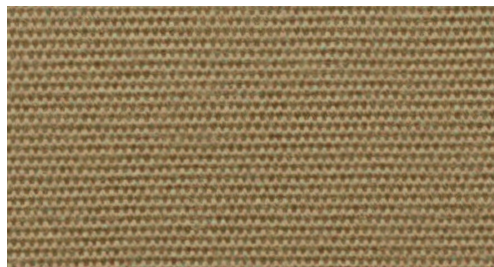
BLUE  
REF: ...BU - CAT.: C - ACRYLIC



FONDANT  
REF: ...FOU - CAT.: A - ACRYLIC



MOKKA  
REF: ...MU - CAT.: A - ACRYLIC



ROCK  
REF: ...ROU - CAT.: A - ACRYLIC



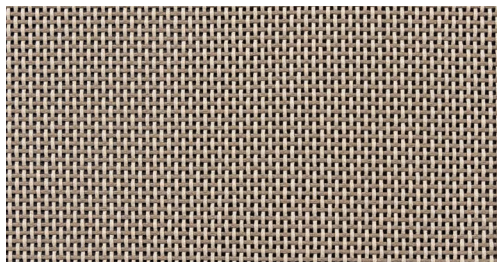
## PARASOL BATYLINE

THE BATYLINE FOR OUR OAZZ IS WOVEN THIGHT AND GIVEN A COATING TO FURTHER PROTECT THEM FROM THE ELEMENTS.

WHITE  
REF: ...WU



CAPPUCCINO  
REF: ...CAU



BLACK  
REF: ...ZU

